



TRABAHO 
NEGOSYO 
KONSUMOR 

Trade and Industry Situationer & Plan

SECRETARY RAMON M. LOPEZ
DEPARTMENT OF TRADE AND INDUSTRY



VIETNAM
7.0%



CHINA
6.1%



INDONESIA
5.0%



MALAYSIA
4.4%



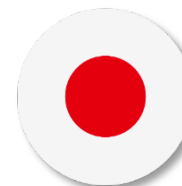
TAIWAN
2.7%



THAILAND
2.4%



S.KOREA
2.0%



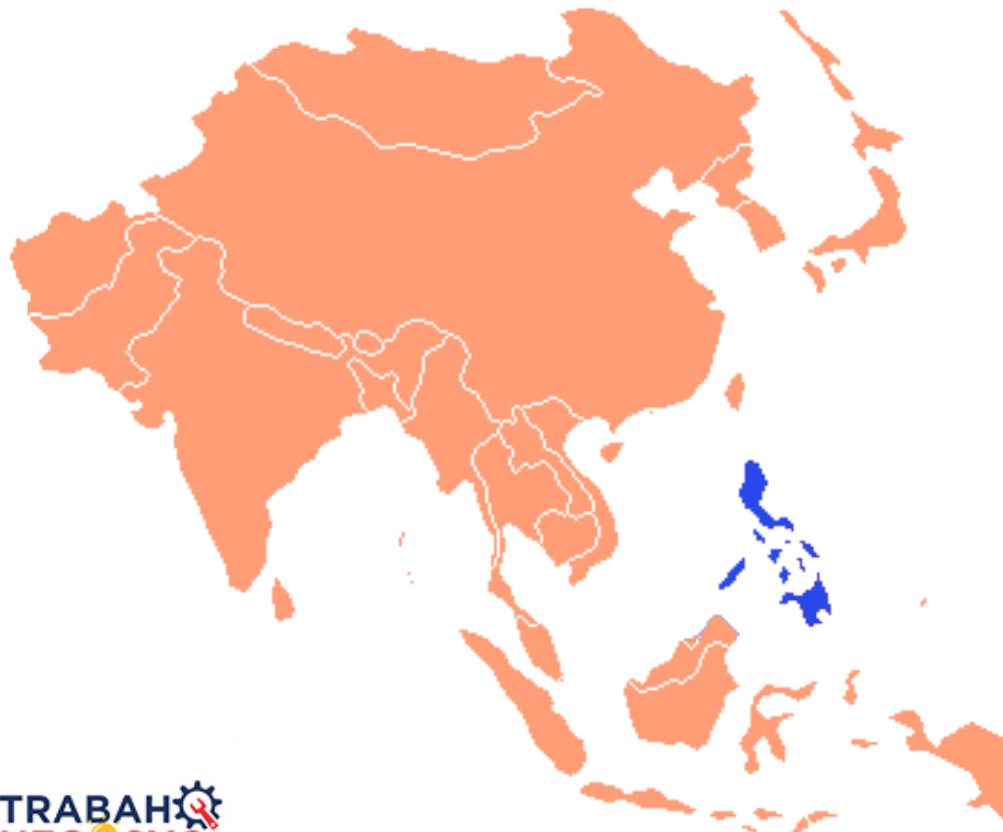
JAPAN
0.7%



SINGAPORE
0.7%



HONG KONG
-1.2%



Philippines, 2nd-fastest growing economy in ASEAN during 2019



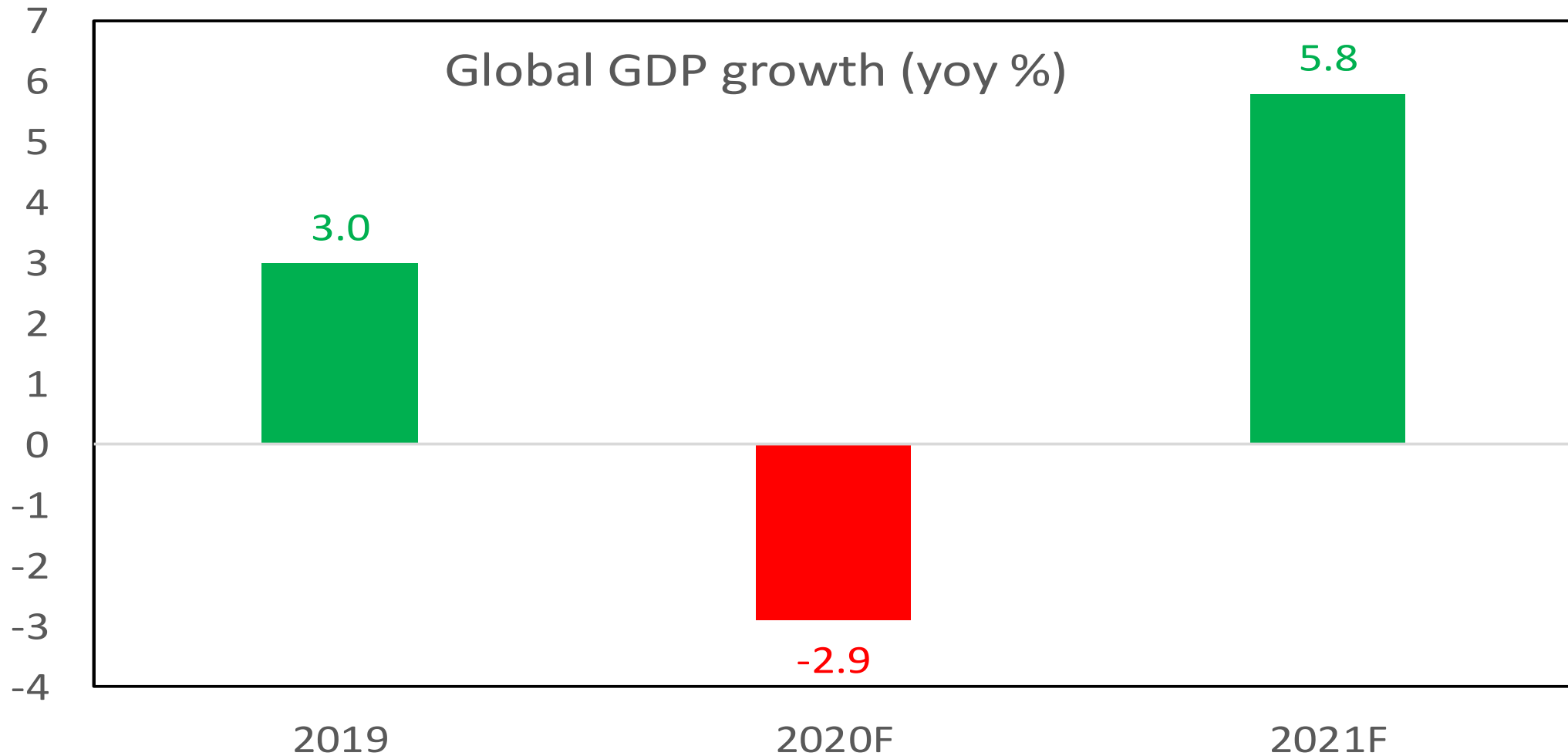
PHILIPPINES

6.0%

Q1 2020 GDP contracts in major economies, including US, EU, China, Hong Kong, Singapore, and Philippines due to COVID and lockdowns

yoy GDP growth rate in:	Q1 2019	Q2 2019	Q3 2019	Q4 2019	Q1 2020
US	3.1	2.0	2.1	2.1	-4.8
EU	1.7	1.5	1.6	1.3	-2.7
UK	2.0	1.3	1.3	1.1	-1.6
Japan	0.8	0.9	1.7	-0.4	not yet available
China	6.4	6.2	6.0	6.0	-6.8
Hong Kong	0.7	0.4	-2.8	-2.9	-8.9
Taiwan	1.8	2.6	3.0	3.3	1.5
South Korea	1.7	2.0	2.0	2.3	1.3
Singapore	1.1	0.2	0.7	0.8	-2.2
Indonesia	5.1	5.1	5.0	5.0	3.0
Malaysia	4.5	4.9	4.4	3.6	0.7
Philippines	5.7	5.4	6.3	6.7	-0.2
Thailand	2.9	2.4	2.6	1.6	not yet available
Vietnam	6.8	6.7	7.5	7.0	3.8

Global economy seen to succumb into recession in 2020, to rebound in 2021

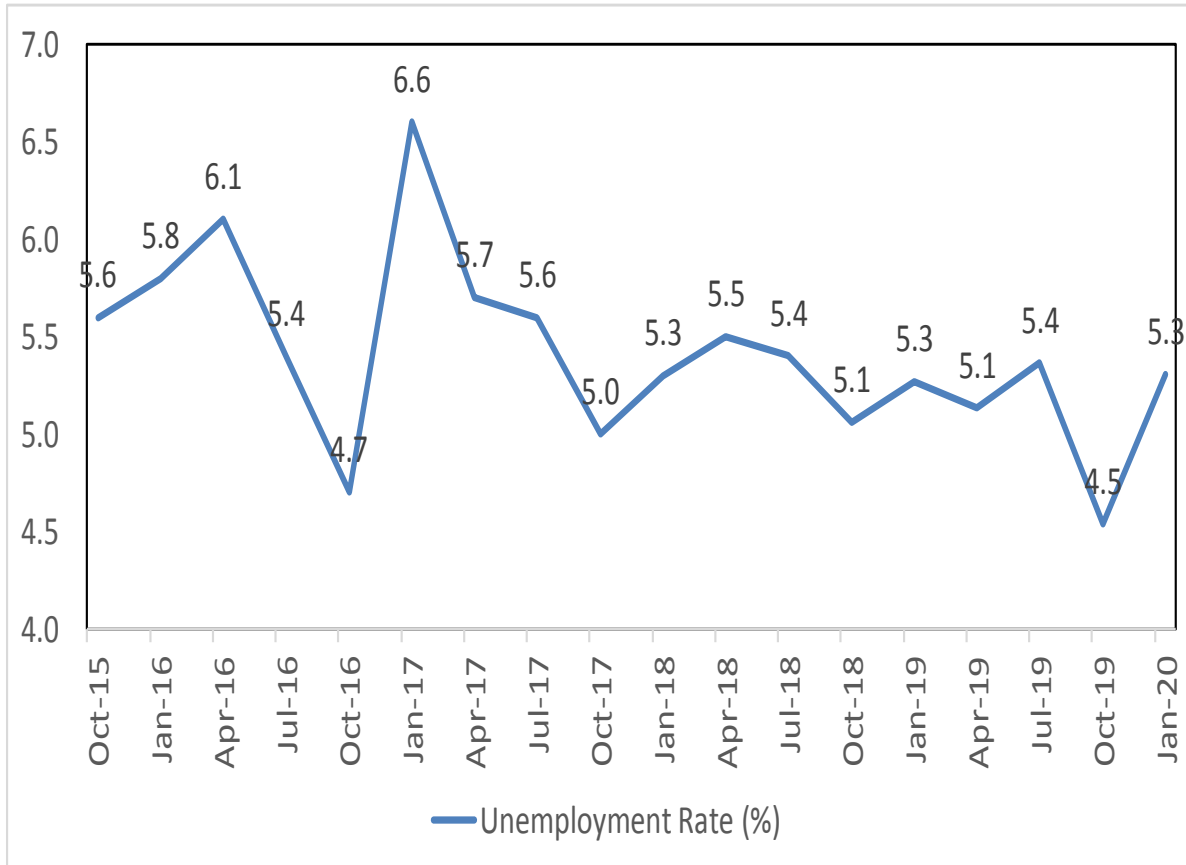


PH GDP growth turns negative in Q1 2020, first contraction since Q4 1998

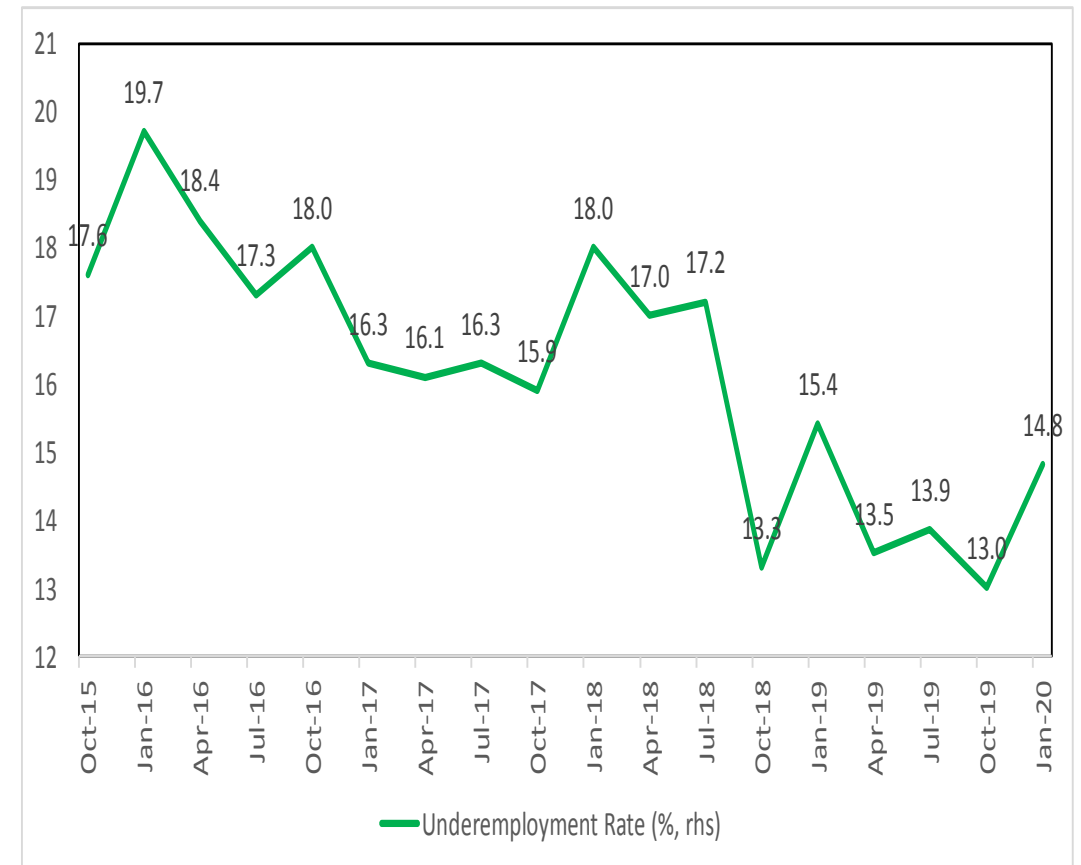
Year-on-year growth rate (%) in:	Q1 2019	Q2 2019	Q3 2019	Q4 2019	Q1 2020		2019
GDP	5.7	5.4	6.3	6.7	-0.2		6.0
Expenditure Side							
Household Expenditure	6.2	5.6	6.0	5.7	0.2		5.9
Government Expenditure	6.4	6.8	8.8	17.0	7.1		9.6
Gross Capital Formation	9.8	-0.8	-0.1	2.5	-18.3		2.5
Exports of Goods & Services	4.2	3.1	1.8	0.3	-3.0		2.4
Imports of Goods & Services	8.9	0.1	-0.1	-0.7	-0.9		1.8
Production Side							
Agriculture, Forestry, Fishing	0.5	0.7	3.0	0.8	-0.4		1.2
Industry	4.9	2.5	5.4	6.0	-3.0		4.7
Construction	5.0	-0.1	15.3	10.7	-1.8		7.8
Manufacturing	5.2	2.0	0.9	4.3	-3.6		3.2
Services	7.1	7.5	7.3	8.1	1.4		7.5

PH unemployment at 5.3% as of Jan 2020, underemployment at 14.8% New jobs created at 1.6M yoy as of Jan 2020

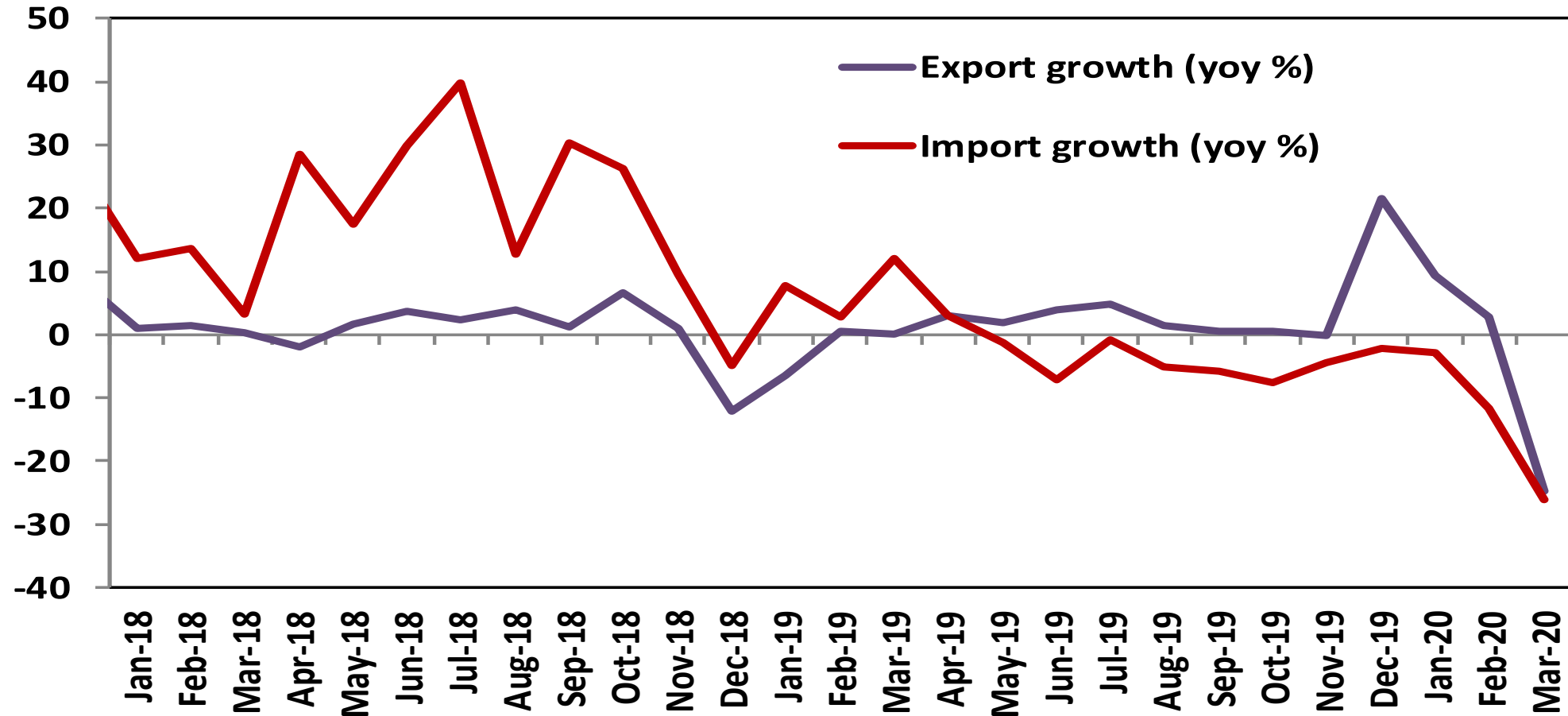
Unemployment Rate (%)



Underemployment Rate (%)

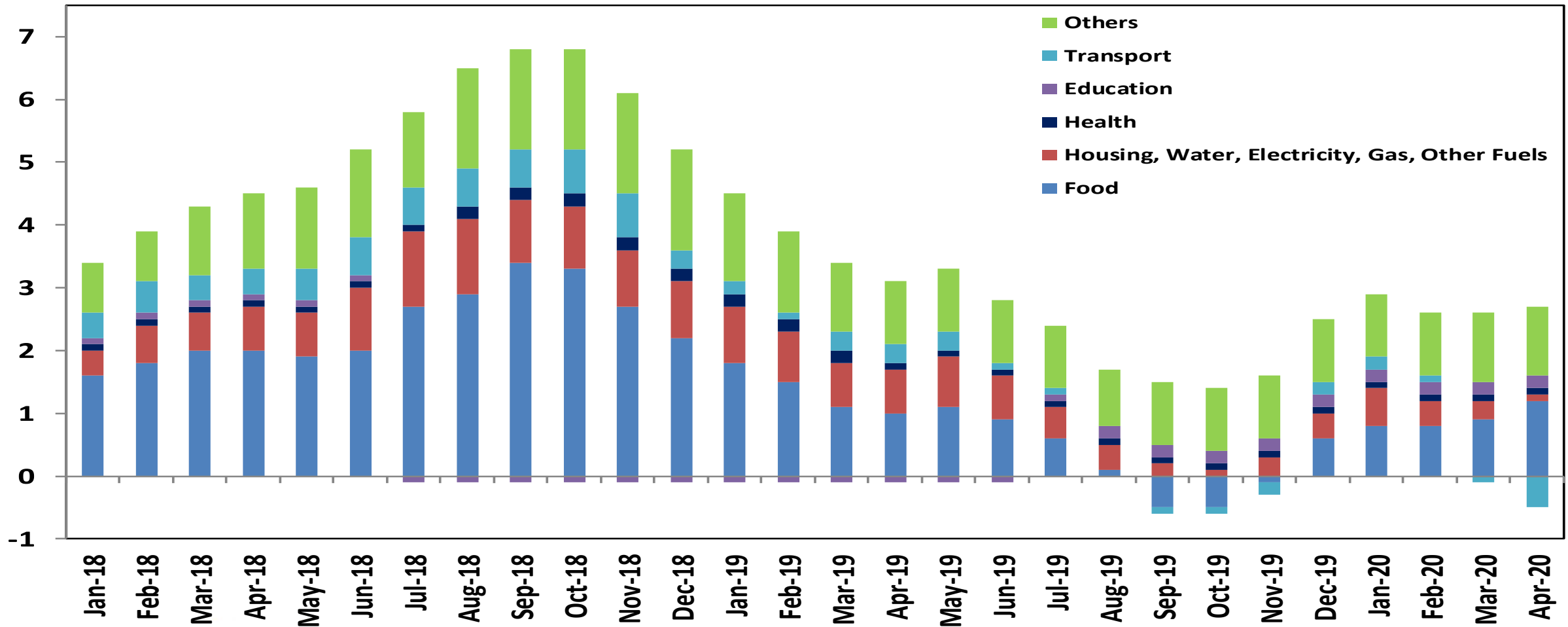


PH merchandise exports fall in Mar (-24.9% yoy) after posting positive growth in Feb (+2.8%) and Jan (+9.4%) as COVID worsens and lockdowns escalate. Imports drop further in Mar (-26.2%)



Inflation at 2.2% in Apr, 2.6% in Jan-Apr, largely due to slump in global oil prices.

Manageable inflation, within government's target range of 2%-4%



**COVID-19 Pandemic and
declaration of Enhanced
Community Quarantine –
WHERE WE ARE**



Situation:

Almost all closed except few very essential



DTI Action: Immediate Release of Issuances

DTI MEMORANDUM CIRCULAR NO. 20-08

“ENSURING UNHAMPERED MOVEMENT OF CARGO AND TRANSIT OF PERSONNEL OF BUSINESS ESTABLISHMENTS ALLOWED TO OPERATE DURING THE ENHANCED COMMUNITY QUARANTINE OF LUZON, AMENDING FOR THIS PURPOSE MEMORANDUM CIRCULAR NO. 20-06 s. 2020”



**DELIVERY OF
BASIC GOODS**

DO NOT DELAY



**DELIVERY OF PACKAGING
MATERIALS FOR BASIC GOODS**

DO NOT DELAY



**DELIVERY OF RAW MATERIALS
FOR BASIC GOODS**

DO NOT DELAY

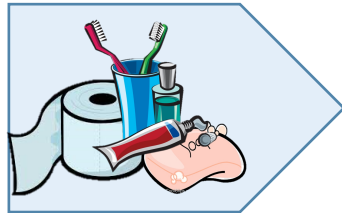
ENTERPRISES ALLOWED TO OPERATE DURING THE ENHANCED COMMUNITY QUARANTINE

Manufacturing and Processing Plants of Basic Food Products, Essential Products, Medicine and Medical Supplies such as:



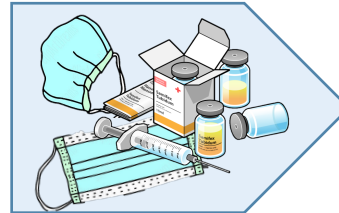
ALL FOOD

Including food preparations and water refilling stations



ESSENTIAL HYGIENE PRODUCTS

Including soap and disinfectants



MEDICINES AND MEDICAL PRODUCTS

PPEs, masks, gloves, and others



RETAIL ESTABLISHMENTS

Groceries, supermarkets, hypermarkets, convenience stores, public markets, pharmacies and drug stores



LOGISTICS SERVICES

cargo handling, warehousing, trucking, freight forwarding, and shipping line



HOSPITALS AND MEDICAL CLINICS



DELIVERY SERVICES

transporting only food, water, medicine, or other basic necessities



BANKS AND CAPITAL MARKETS



POWER AND OTHER UTILITIES

energy, water, IT and telecommunication supplies and facilities, waste disposal services



EXPORT AND BPO COMPANIES

DTI MEMORANDUM CIRCULAR NO. 20-11

“PRESCRIBING GUIDELINES FOR ADDITIONAL BUSINESS ACTIVITIES ALLOWED TO OPERATE TO ENSURE THE STEADY SUPPLY OF BASIC NECESSITIES AND ESSENTIAL COMMODITIES, SUPPLEMENTING MC 20-08”



RAW & PROCESSED MATERIALS

packaging and and other inputs, including the manufacturing and distribution

JMC 20-01: Nationwide Price Freeze

- The Department of Agriculture, Department of Trade and Industry, and Department of Health issued “**Prize Freeze Under A State of Calamity Throughout the Philippines Due to Corona Virus Disease 2019 (COVID-19)**” on 18 March 2020
 - > This enhances measures to continue price freeze on all basic necessities (agricultural and manufactured basic goods, essential medicines and other medical supplies)
 - > It also intensified monitoring and enforcement by composite team; it fully mobilized the Local Price Coordinating Councils (LPCCs)
 - > Stronger supervision from LGU’s public market coordinators to ensure SRP compliance

DTI Memorandum Circular No. 20-07: Anti-Hoarding and Anti-Panic Buying

- This provides reasonable limit in the sale/purchase of essential and vital goods to ensure adequate supply and stable prices
- Launched a strong campaign on Anti-Hoarding/Anti-Profiteering through a composite Task Force (DTI - PNP/CIDG – NBI)



Enforcement Activities from March 24 – May 13, 2020

PHP 94,097,860.50

Total Amount of Confiscate Paraphernalia

262

Enforcement Activities conducted by the PNP-CIDG/NBI that were certified by the DTI-FTEB

427

Total Number of Apprehended Individuals for Price Act Violation

SECTORS OPEN IN MODIFIED ECQ

Sector	ALLOWED		PARTIALLY ALLOWED	
	Number of Sectors	Number of Employment	Number of Sectors	Number of Employment
Agriculture	3	13,975	-	-
Industry	18	232,240	19	551,866
Services	27	1,874,596	13	855,946
Total	48	2,120,811	32	1,407,812

- **Areas Under Modified ECQ (Post – 15 May):** NCR, Laguna, Cebu City
- 90.9% of all Industry Division are already allowed to operate. 32 of this industries or 36.4% were partially allowed to operate
- The area employs 42.5% of the national employment and under Modified GCQ, 93.7% of the employment of the areas will be allowed to work and operate again.

SECTORS OPEN IN GCQ

assuming there are still under Modified ECQ

Sector	Number of Sectors	Number of Employment
Agriculture	3	169,759
Industry	37	1,300,618
Services	41	3,055,677
Total	81	4,526,052

- Sectors open under GCQ (Post- 15 May) comprise 92% of the total number of sectors and employ 51.1% of national employment
- The increase in number reflects the reassignment of larger and industrial regions and the reopening of sectors.

SECTORS OPEN IN GCQ

assuming all areas are already in GCQ

Sector	Number of Sectors	Number of Employment
Agriculture	3	183,734
Industry	37	2,084,724
Services	41	6,024,466
Total	81	8,292,924

- Sectors open under GCQ (Post- 15 May) comprise 92% of the total number of sectors and employ 93.6% of total employment
- The increase in number reflects the reopening of the largest concentration of employment in sectors and areas, like Construction.

SECTORS CLOSED IN ECQ/GCQ

Sector	Number of Sectors	Number of Employment
Services	7	564,244
Total	7	564,244

- 8.0% of the total number of sectors are still not allowed to operate under E/GCQ which comprises 6.4% of total Employment

A woman in a light blue uniform and cap is checking a clipboard while a man in a face shield and mask shows her cans in a grocery store aisle. The man is wearing a white t-shirt with a yellow and blue design and a dark vest. The woman is wearing a blue patterned face mask and a dark cap. The man is holding several cans of food. The woman is holding a blue pen and looking at the clipboard. The background shows shelves of canned goods and a shopping cart.

**Moving forward:
Other assistance offered**

MSMEs: ENGINE OF ECONOMIC GROWTH

99.52% (998,342) business establishments in the Philippines are MSMEs

1,003,111

TOTAL ESTABLISHMENTS

MICRO – 88.45% (887,272)

SMALL – 10.58% (106,175)

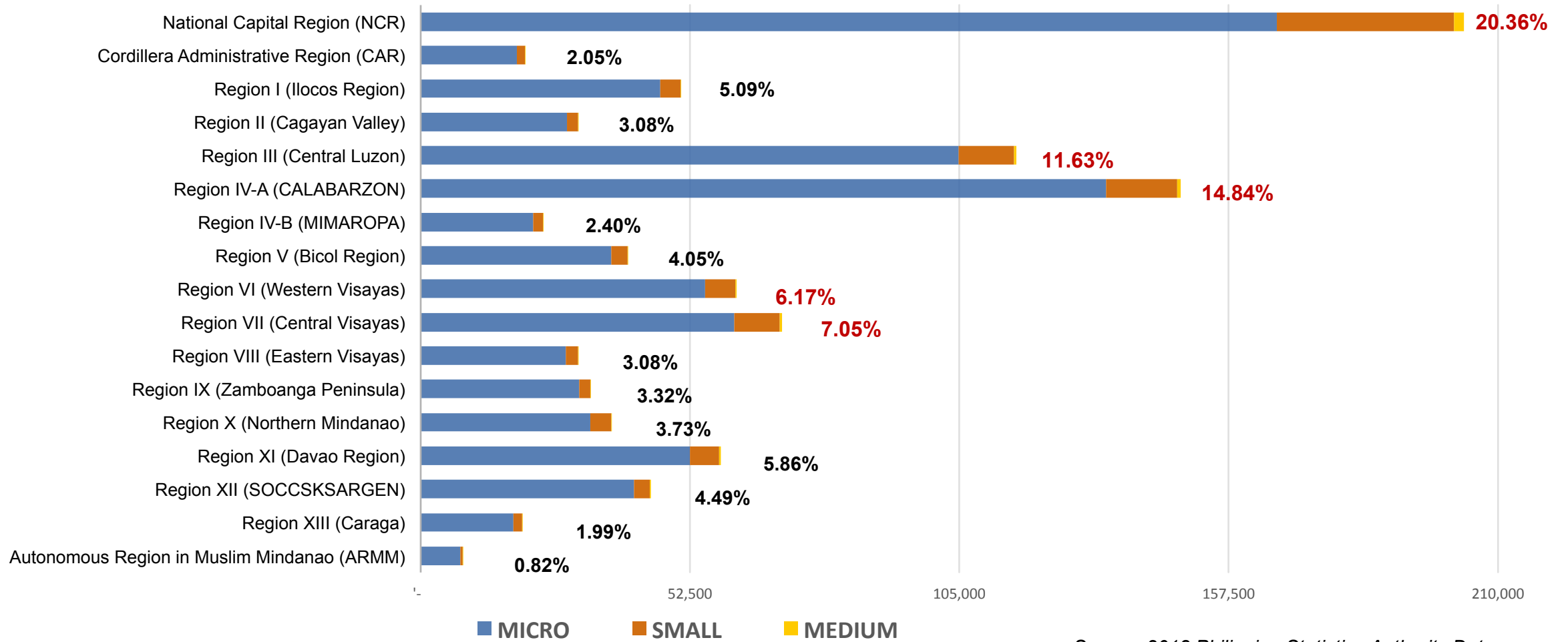
MEDIUM – 0.49% (4,895)

LARGE – 0.48% (4,769)

Note: As per data gathered by DILG from LGUs, there are **about 1.5 million** registered enterprises in the country

Source: 2018 Philippine Statistics Authority Data

DISTRIBUTION BY REGION

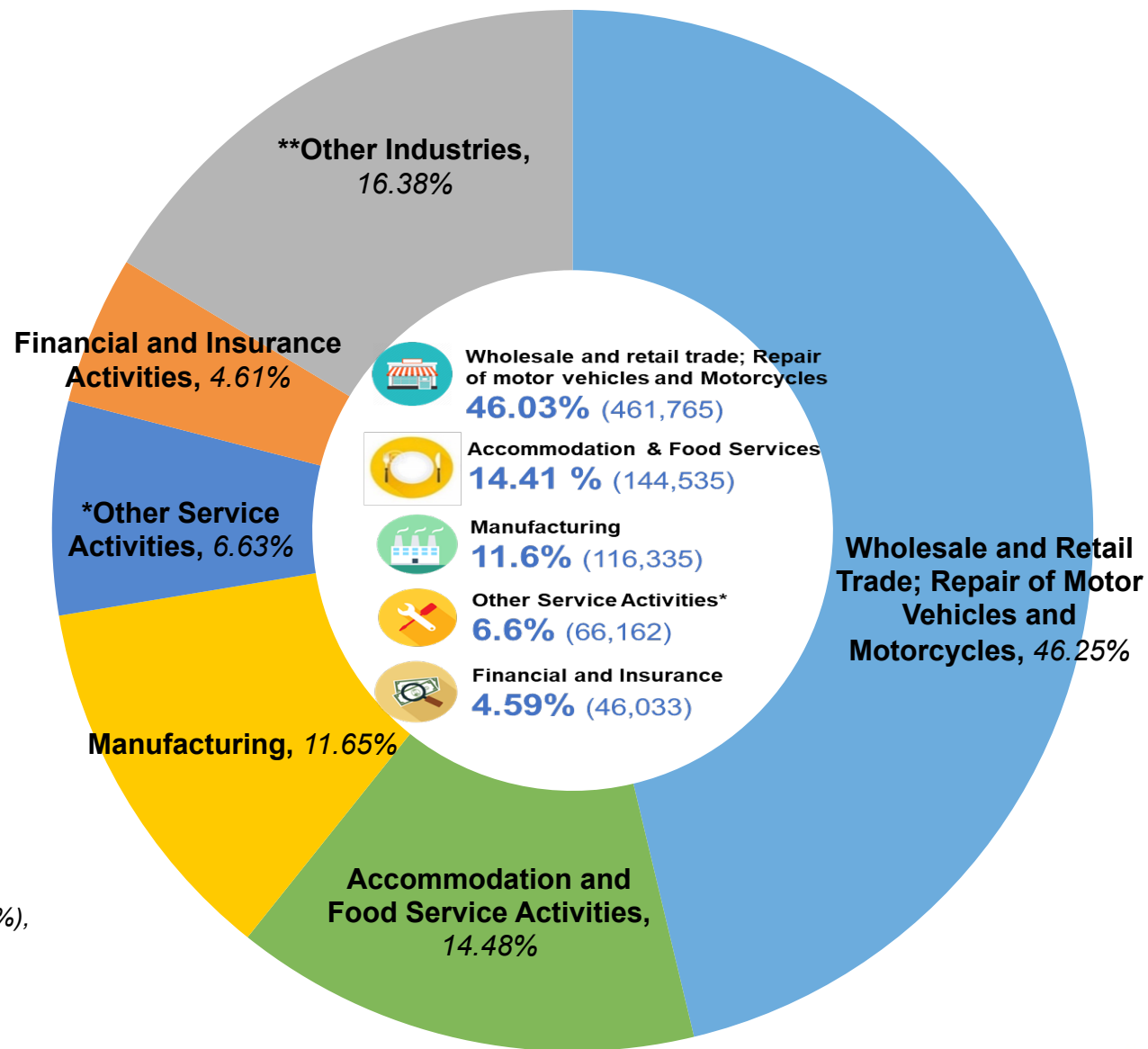


Source: 2018 Philippine Statistics Authority Data

DISTRIBUTION OF MSME PER INDUSTRY SECTOR

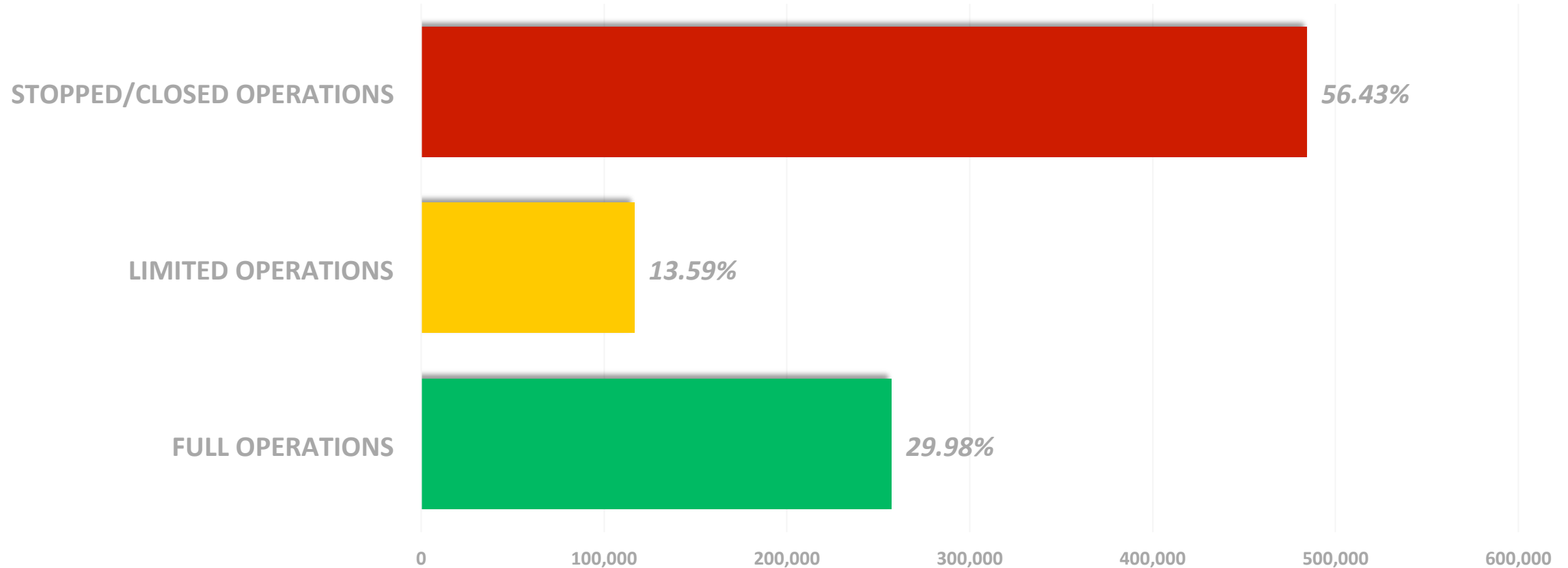
***Other Service Activities** include Personal Services for Wellness, except Spas, Repair of Personal and Household Goods, Funeral and Related Activities, Repair of Computers and Communications Equipment, Laundry Activities, and Other Personal Service Activities.

****Other Industries** (16.38%)
 Information and Communication (2.96%),
 Human Health and Social Work Activities (2.87%),
 Education (1.78%),
 Administrative and Support Service Activities (1.76%),
 Professional, Scientific and Technical Activities (1.59%),
 Arts, Entertainment, and Recreation (1.54%),
 Real Estate Activities (1.16%),
 Transport and Storage (1.10%),
 Agriculture, Forestry, and Fishing (0.85%),
 Construction (0.43%),
 Water Supply; Sewerage, Waste Management and Remediation Activities (0.14%),
 Electricity, Gas, Steam, and Air Conditioning Supply (0.12%),
 Mining and Quarrying (0.08%)

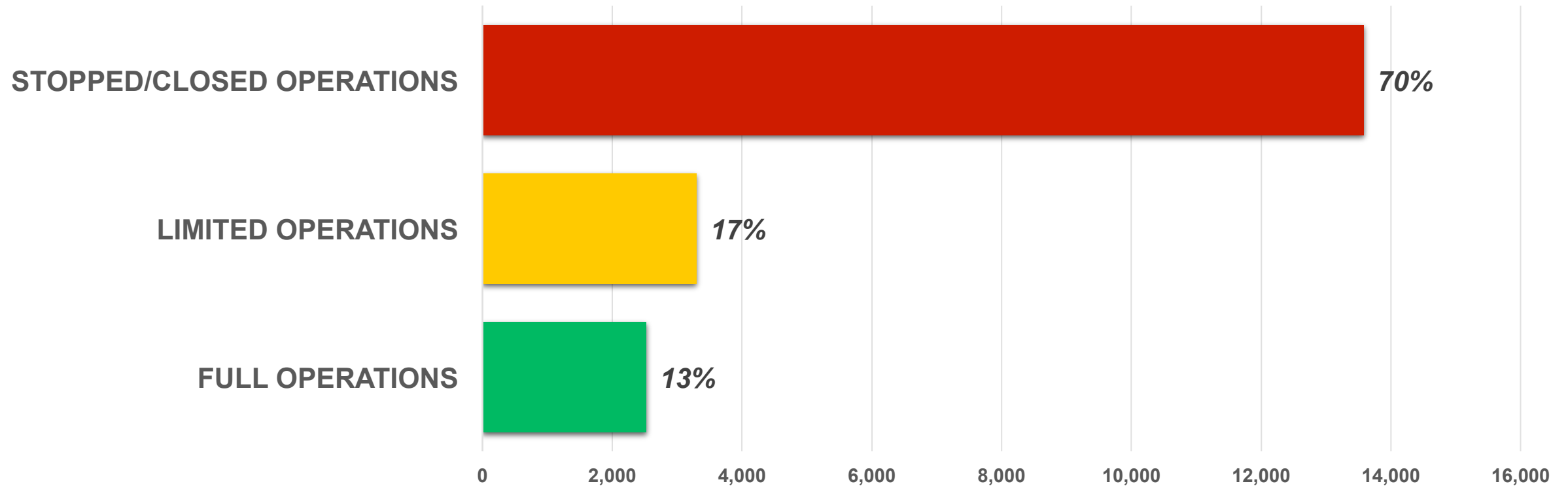


Source: 2018 Philippine Statistics Authority Data

MSMEs' Business Operations Affected by COVID-19 (All Regions)



MSMEs' Business Operations Affected by COVID-19 (NCR)



DTI Issuances to Assist MSMEs

- **MC 20-12** *Guidelines on the Concessions on Residential Rents; Commercial Rents of MSMEs*
- **MC 20-14** *Enhanced Operations for BPO Companies and Export Enterprises, and their Service Providers*
- **MC 20-15** *Extension of Operating Hours for Retail Establishments Authorized to Operate During ECQ*
- **Joint Administrative Order 20-01** *Adoption of Processes for the Expedited Release of Refrigerated Containers and Dry Vans*



DTI Programs for MSMEs



PhP1B COVID 19 Pondo sa Pagbabago at Pag-asenso Enterprise Rehabilitation Fund (P3-ERF)

Micro enterprises may borrow PhP10,000 up to PhP200,000 while Small enterprises may borrow a higher loan amount but will not exceed PhP500,000. All applications will be accepted after the ECQ is lifted.



Livelihood Seeding Program – Negosyo sa Barangay (LSP-NSB)

The allotted funding for the LSP-NSB amounts to PhP203 million, which will be used to provide a package of livelihood kits and business advisory assistance and services, amounting to at least PhP5,000 up to PhP8,000 to MSMEs affected by natural and human-induced calamities including health disasters.



Shared Service Facilities

“Shared Success for Filipino MSMEs”

Shared Service Facilities (SSF) Project / Fabrication Laboratories (FabLabs)

SSF FabLabs are producing personal protective equipment (PPEs), ethyl alcohol, face shields and aerosol boxes that can be made manually, or using digital fabrication machines such as 3D Printers, Laser Cutters, etc. Fabrication of items such as scrub suits, reusable masks and ventilators are being explored to address the gap.

RE-PURPOSING MANUFACTURING TOWARDS ESSENTIAL PRODUCTS

DTI-BOI provided assistance to encourage the re-purposing of facilities from miscellaneous goods to the manufacture of essential products to ensure continuous supply

- a. Sourcing of materials locally
- b. Importation of materials and equipment
- c. Travel of experts for installation of needed machinery
- d. Registration with FDA and PEZA
- e. Linkage with suppliers, hospitals and government agencies

Face Masks (medical grade)

MedTecs

- Taiwanese-owned, based in Bataan
- N88 Surgical Masks, mostly exported; donated N88s & N95s (from China factory) during Taal eruption
- Current Capacity – 8mn pcs. Committed 8mn pcs in April and 10mn pcs for each month of May, June, July



Yokoisada

- Japanese, based in Clark
- Capacity of about 5mn pcs per month, but only 20% of workforce reporting
- DTI & Clark worked to recruit workers. Now able to sell 2mn pcs to local.
- Will work with DTI to increase to 5mn pcs (e.g. 24hr operations)



EMS (face masks – medical grade and ventilators)

- Filipino, toll manufacturer of electronic products for big Japanese cos. & others eg Dyson
- By May 15, will be able to produce most competitively-priced N88. Very, very thin margin. Sourcing financing for equipment and raw materials.
- 10mn pcs a month. Finalizing 100mn pc contract with DBM PS.
- Next looking at N95s and Ventilators.
- Testing two prototype Ventilators, but reaching out also for DOST Ginhawa model
- proto-typing 2 models; reaching-out to DOST Ginhawa (Dr. Balgos)

P&G (face masks – medical grade)

- Will have capacity for 1.5mn pcs per month. Internal use and for donation to DOH only

New Kinpo group (face masks – medical grade and ventilators)

- Taiwanese, global leader in electronics manufacturing
- Looking into manufacture of masks (2.5mn pcs by end May; and ventilators 1,000 units by end April)

UNISOL (face masks non-medical grade and coveralls)

- Cebu-based corporate uniform company
- 2ply (fluid-repellant outer layer, absorbent inner) washable mask for public use e.g. factory workers can use 2 masks per work shift)
- Capacity of 30K pcs per day. Raw material inventory good for only 1mn masks
- Php50 per mask
- Will allow more medical grade N88s to reach health workers and patients
- Will also produce Reusable Protective Suits that are NON MEDICAL GRADE with Taffeta with Silver Black Lining (SBL) as material.
- Currently, the product is being evaluated by the Infectious Team of Chong Hua Hospital in Cebu
- Other Initiatives:
 - Atelier
 - Team Michael Leyva
 - Kimxy Garments
 - Mich Dulce & OVP
 - . . . many others



FACE MASK



REPELLENT OUTER LAYER

ELASTIC EAR LOOPS

EXPANDABLE FOR BETTER COVERAGE

ABSORBENT INNER LAYER

NOT FOR HOSPITAL USE.



EAR LOOPS

WASHABLE

15 PCS

OUTER LAYER: FLUID REPELLENT
INNER LAYER: ABSORBENT

NOW AVAILABLE! REUSABLE PROTECTIVE SUITS

FRONT



BACK



ELASTIC OPENING

MADE OF REUSABLE FLUID REPELLENT TAFFETA W/ SILVER BACK LINING

ZIP-UP OVERALLS WITH MAXIMUM COVERAGE

VELCRO COVER PANEL FOR THE ZIPPER

ELASTIC OPENING FOR HEAD, HANDS & FEET

EXTRA MATERIAL IN ARMS AND LEGS FOR MORE FREEDOM IN MOVEMENT

FREE

✓ WASHABLE FACE MASK
✓ BOOT COVER

Coveralls – Medical Grade

CONWEP

- Garments and wearable exporters
- Industry collaboration with DTI-BOI, DOH and PGH, DOST-PTRI.
- Medical grade for use even in high-risk environment (e.g. COVID positive wards, surgery)
- April-June: 300K pcs of gowns, will expand thereafter

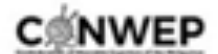
BFS Health Corp. / Baller Sportswear Corp. / Avant Gard North Innovations Inc. / North Pacific Knitting / Endless Knitting

- Working with BOI and Dow Chemicals (for fabric waterproofing) to develop acceptable material for medical grade PPEs.
- Group has textile mill for fabrics, sewing facilities for suits; has stocks of yarn and chemicals.
- Formulating taffeta-equivalent fabric but lighter, hopefully develop impermeable nonporous fabric.
- Fabric capacity is about 12-15 tons per day, throughput equivalent to 25-30k PPEs

FIGHT COVID-19

Factory in the
Philippines
to produce
10,000
medical grade
PPE Coveralls
per day

For HOSPITAL USE such as
OPERATING ROOMS, ICUs,
& COVID-19 POSITIVE WARDS



Face Shields

Linking volunteer industry & academe groups for an ecosystem doing Face Shields for donation

- Linking volunteers with those with 3D Printers, Equipment, and Materials (e.g. acetate films, clear PVC sheets, rigid foams)

3D Printers and Laser Cutters

- UP Marine Science Institute
- Ateneo Environmental Science
- My3D Concepts
- DTI Fabrication Laboratories

... And many others

Foams

- Mandaue Foam

Plastics

- Manly Plastics
- Philippine Resins Industries Inc.

Alcohol

Destileria Limtuaco

- Production of 70% Ethyl Alcohol @ 15K liters a day

San Miguel Corporation

- Production of rubbing alcohol (for donation only)



Monitored initiatives also from Alliance Global and Asia Brewery.

Ventilators

Collins (US, UK)

- aerospace parts company; global leader in airplane interiors and galleys —including oxygen masks
- evaluating off-patent designs from IPOPHL and BOI, for ventilators

Dyson (UK, SG)

- Already started producing ventilators in the UK
- May mass manufacture thru, among others EMS and New Kinpo

DTI & DOLE INTERIM GUIDELINES ON WORKPLACE PREVENTION AND CONTROL OF COVID-19

INCREASE PHYSICAL AND MENTAL RESISTANCE

All workers must practice daily good habits:



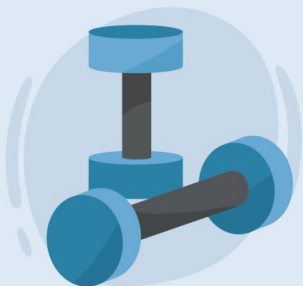
Consume **nutritious** and **well-cooked** food



Drink plenty of fluids & **avoid alcoholic beverages**



Sleep at least **8 hours** a day



Take time to **exercise**

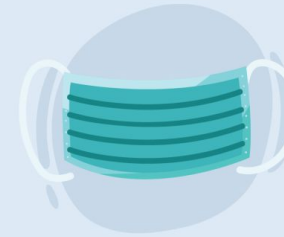


Take **vitamins***

**Companies shall also provide free medicines and vitamins to their employees. Provide referral for workers needing counseling of presenting with mental health concerns.*

REDUCING TRANSMISSION OF COVID-19

PRIOR TO ENTRANCE IN BUILDINGS OR WORKPLACES, all employees and workers shall:



Wear **face masks** at all times and only remove them when eating or drinking



Accomplish the daily **Health Symptoms Questionnaire** and submit to the guard/ designated safety officer*



Have their **temperatures** checked**



Spray **alcohol/sanitizers** for both hands and be provided with disinfectant foot baths at the entrance if practicable

**The Health Symptoms Questionnaire may be accessed thru: bit.ly/DTI-DOLE_workplace-guidelines*

***For temperatures above 37.5°C even after five (5) minutes of rest, person shall be isolated in an identified area and not allowed entry*

REDUCING TRANSMISSION OF COVID-19

INSIDE THE WORKPLACE



DISINFECT

All workplace areas and frequently handled objects such as door knobs and handles, shall be cleaned and disinfected, at least **once every two (2) hours**.



SANITIZE

All washrooms and toilets shall have sufficient **clean water and soap**. Sanitizers shall be made available in all areas where workers pass.



PHYSICAL DISTANCING

Workers, whether in office workstations or operations area, shall always practice physical distancing at a minimum of **one-meter radius space** between each other.



NO EATING IN COMMUNAL SPACES

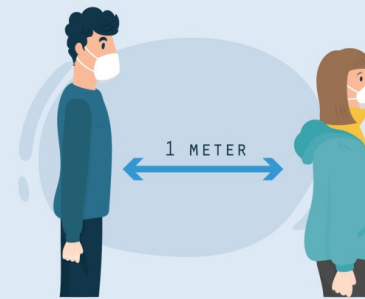
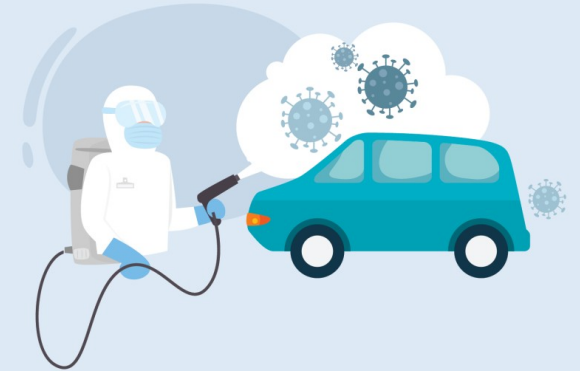
It is best to eat in **individual work areas** and all wastes shall be properly disposed.



Isolation area should be **well-ventilated** and **disinfected** frequently.

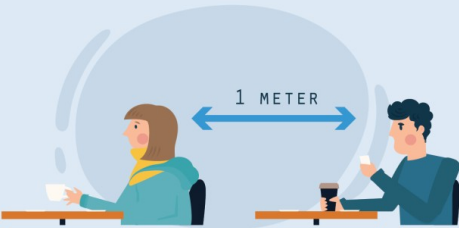
Clinic staff assigned to assess workers held in isolation area shall be provided with the appropriate **medical-grade PPEs** by the establishment.

Equipment or vehicle must go through **disinfection** process.



If there is a long queue, roving officers shall instill physical distancing of **one (1) meter**.

REDUCING TRANSMISSION OF COVID-19



If eating in individual work areas is impossible, employer shall ensure that **physical distancing is maintained** in dining areas with one (1) worker per table, and one-meter distance per worker.

Workers are **discouraged** from engaging in conversation with masks off.



Tables and chairs shall be cleaned or disinfected **before and after use**, as well as at the **end of the work day**.

Canteens and kitchens should be **disinfected regularly**.



MINIMIZE CONTACT RATE

- Alternative work arrangements such as working-hour shifts, work from home (WFH), where feasible and on rotation basis are encouraged.
- Workstation layout should be designed to allow for unidirectional movement in aisles, corridors or walkways.
- Prolonged face-to-face interaction between workers and clients are discouraged.
- Number of people inside enclosed spaces (rooms, stores, halls, elevators) shall be limited to observe the one-meter physical distancing.
- Masks shall be worn at all times.
- Use of stairs should be encouraged subject to physical distancing requirements. If more than two stairways are accessible, one may be used exclusively for going up and another for going down.
- Meetings needing physical presence shall be kept to a minimum number of participants and with short duration; video-conferencing shall be used for lengthy discussions among workers.
- Online system shall be highly encouraged to be utilized for clients needing assistance from offices, including the use of video-conferencing.
- Office tables should be arranged in order to maintain proper physical distancing; barriers may be provided between tables.
- Roving officers shall always ensure physical distancing and observance of minimum health protocols.

DUTIES OF EMPLOYERS & WORKERS

EMPLOYERS SHALL...

Provide **necessary company policies** for the prevention and control of COVID-19.

Ensure health insurance for workers, including the **provision of resources and materials** needed to keep the workers healthy and workplace safe (e.g. masks, soap, sanitizer, disinfectant, PPEs, COVID-19 testing kits).

Designate a **safety officer** to monitor COVID-19 control measures such as physical distancing, wearing of masks, regular disinfection, compliance to thermal scanning, and accomplishment of health symptoms questionnaire.

Where feasible, provide **shuttle services** and/or decent **accommodation on near-site location** to lessen travel and people movement, as well as enjoin the hiring from the local community.

Put up a **COVID-19 Hotline and Call Center** for employees to report if symptomatic and daily monitoring of employee condition.



EMPLOYEES SHALL...

Comply with all workplace measures in place for the prevention and control of COVID-19, such as frequent hand washing, wearing of masks, and observe physical distancing, etc.

Observe proper respiratory etiquette such as coughing and sneezing into tissue or shirt sleeve if tissue is not available; disposing used tissues properly; and, disinfecting hands immediately after a cough or sneeze.



WORKPLACE WITH IMMINENT DANGER SITUATIONS



In workplaces where workers are evidently at risk of infection, such as health-care and other frontline services, the employer shall comply with **DOH Department Memorandum No. 2020-0178: Interim Guidelines on Health Care Provider Networks during the COVID-19 Pandemic** issued on 11 April 2020.

Workers in said workplaces must take **extra precautionary measures**, which include observance of strict hygiene and the use of PPE. Employers shall ensure that PPE (e.g. respirators such as N95, gowns, gloves) is properly worn by the workers while at work and disposed of accordingly after use.

COVID-19 TESTING



Employers may test workers for COVID-19. Testing kits used and procured shall be **the responsibility of the employer**. DOH protocols shall be followed for the testing of workers and interpretation of results in accordance with **DOH Memorandum No. 2020-0180: Revised Interim Guidelines on Expanded Testing for COVID-19**, issued on 16 April 2020 and **DOH Administrative Order No. 2020-0014: Guidelines in Securing a License to Operate a COVID-19 Testing Laboratory in the Philippines**, issued on 07 April 2020.

Company policy on COVID-19 testing shall be **formulated and agreed upon by employers and workers** in conformity with DOH protocols.

Workers with a negative test **shall continue to work**. They should be given appropriate advice and instructions once they develop any health complaints or symptoms.

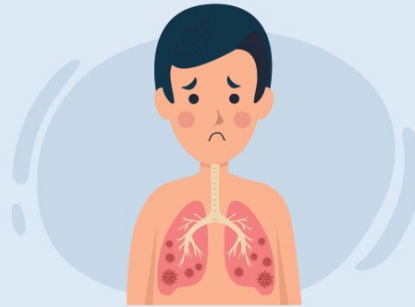
MOST AT RISK WORKERS AND VULNERABLE GROUPS



60 years old and above



Women with high-risk pregnancies



Workers with co-morbidities or pre-existing illnesses
(e.g. hypertension, diabetes, cancer) or with
immunocompromised health status

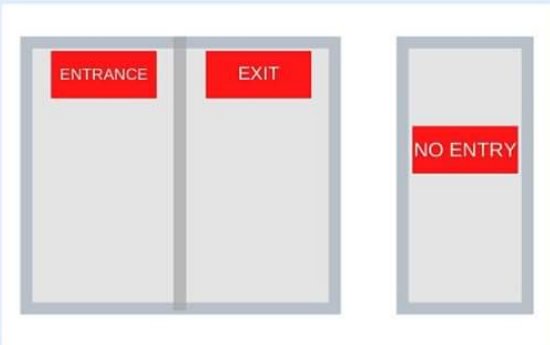
Employers are highly encouraged to allow these workers to do **work-from-home arrangement**. Work agreements should be developed to detail the deliverables from these employees and there shall be **no diminution in wages or benefits**.

GUIDELINES ON THE OPERATIONS OF MALLS AND SHOPPING CENTERS IN AREAS DECLARED UNDER GENERAL COMMUNITY QUARANTINE (GCQ)

Strictly monitor foot traffic and enforce safe distancing inside the shopping center or mall



Limit the **number of people** inside the mall or shopping center or individual store.



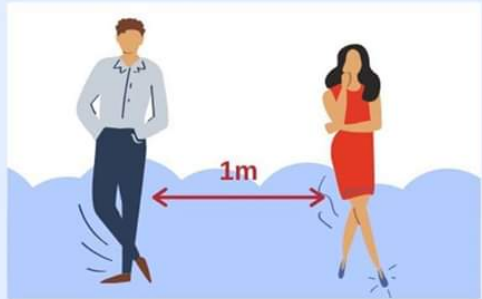
Reduce the number of **open mall entrances** to better manage foot traffic.



Senior Citizens, pregnant women, and persons with disabilities (PWDs) obtaining essential goods are allowed **only one (1) companion**.

GUIDELINES ON THE OPERATIONS OF MALLS AND SHOPPING CENTERS IN AREAS DECLARED UNDER GENERAL COMMUNITY QUARANTINE (GCQ)

Strictly monitor foot traffic and enforce safe distancing inside the shopping center or mall



Ensure social distancing of people **(1 meter apart)** at all times.



Assign personnel to regulate **foot traffic** in high-density areas, e.g., comfort rooms, supermarkets, etc.

Ensure that customers stand on every other step of the escalator to maintain **safe distancing**.



Strictly monitor foot traffic and enforce safe distancing inside the shopping center or mall



Create **one-way flow**, where possible, to decongest queues and facilitate movement.



Increase **police visibility**, should there be a need to enforce strict physical distancing.

GUIDELINES ON THE OPERATIONS OF MALLS AND SHOPPING CENTERS IN AREAS DECLARED UNDER GENERAL COMMUNITY QUARANTINE (GCQ)

Strictly monitor foot traffic and enforce safe distancing inside the shopping center or mall



Limit access to elevators to **Senior Citizens, Person with Disabilities (PWDs), and pregnant women** only. Limit passengers to only half of the original standard capacity of the unit.



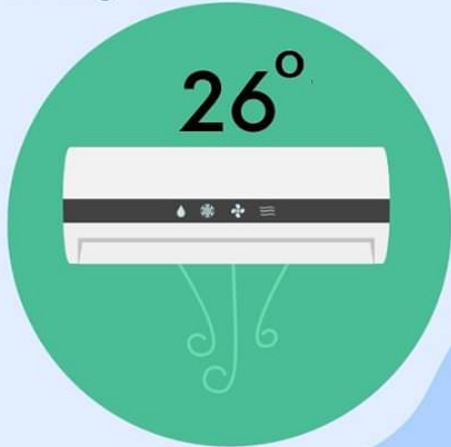
Reduce the seats available for customers to use while waiting.

Assign a centralized pick-up location for stores with delivery/pickup service where delivery service providers can pick up goods



GUIDELINES ON THE OPERATIONS OF MALLS AND SHOPPING CENTERS IN AREAS DECLARED UNDER GENERAL COMMUNITY QUARANTINE (GCQ)

Regulate air conditioning inside the mall to 26 degrees centigrade



Turn off free Wi-Fi for customers



Suspend the conduct of sale events, marketing events, and other promotions which tend to attract large crowds



Rout 66

Selected emerging economies ranked on four measures of financial strength

Strongest Weakest

1=strongest

Country (with rank)	Public debt % of GDP, 2020*	Foreign debt	Cost of borrowing [†]	Reserve cover [‡]	Country (with rank)	Public debt % of GDP, 2020*	Foreign debt	Cost of borrowing [†]	Reserve cover [‡]
1 Botswana	Blue	Blue	Blue	Blue	34 Croatia	Red	Red	Blue	Blue
2 Taiwan	Blue	Blue	Blue	Blue	35 Qatar	Orange	Red	Blue	Orange
3 South Korea	Blue	Blue	Blue	Blue	36 Kazakhstan	Blue	Red	Blue	Orange
4 Peru	Blue	Blue	Blue	Blue	37 Egypt	Red	Blue	Orange	Orange
5 Russia	Blue	Blue	Blue	Blue	38 Namibia	Blue	Orange	Orange	Orange
6 Philippines	Blue	Blue	Blue	Blue	39 Uganda	Blue	Blue	Orange	Orange
7 Thailand	Blue	Blue	Blue	Blue	40 Costa Rica	Orange	Blue	Orange	Orange
8 Saudi Arabia	Blue	Blue	Blue	Blue	41 Ethiopia	Orange	Blue	Orange	Red
9 Bangladesh	Blue	Blue	Blue	Blue	42 Kenya	Orange	Blue	Orange	Orange
10 China	Orange	Blue	Blue	Blue	43 Pakistan	Red	Blue	Orange	Orange
11 Guatemala	Blue	Blue	Blue	Blue	44 Turkey	Blue	Orange	Orange	Red
12 Vietnam	Blue	Blue	Blue	Blue	45 Iraq	Red	Blue	Orange	Blue
13 Poland	Orange	Blue	Blue	Blue	46 Senegal	Orange	Orange	Orange	Orange
14 Nigeria	Blue	Blue	Orange	Blue	47 South Africa	Orange	Orange	Blue	Orange
15 Trinidad & Tob.	Blue	Blue	Blue	Blue	48 Ghana	Orange	Blue	Orange	Orange
16 Indonesia	Blue	Blue	Blue	Orange	49 Hungary	Orange	Red	Blue	Orange
17 UAE	Blue	Orange	Blue	Blue	50 Jordan	Red	Orange	Orange	Orange
18 India	Orange	Blue	Blue	Blue	51 Panama	Orange	Red	Blue	Red
19 Czech Rep.	Blue	Orange	Blue	Orange	52 Gabon	Orange	Orange	Orange	Red
20 Paraguay	Blue	Blue	Blue	Orange	53 Ukraine	Orange	Orange	Orange	Orange
21 Bolivia	Blue	Blue	Orange	Blue	54 Ecuador	Orange	Orange	Red	Red
22 Kuwait	Blue	Orange	Blue	Orange	55 El Salvador	Orange	Orange	Orange	Orange
23 Azerbaijan	Blue	Orange	Blue	Orange	56 Jamaica	Red	Red	Blue	Orange
24 Ivory Coast	Blue	Blue	Orange	Blue	57 Argentina	Red	Orange	Red	Orange
25 Malaysia	Orange	Orange	Blue	Orange	58 Oman	Orange	Red	Orange	Orange
26 Morocco	Orange	Blue	Blue	Blue	59 Mongolia	Orange	Red	Orange	Orange
27 Romania	Blue	Orange	Blue	Orange	60 Tunisia	Orange	Orange	Orange	Orange
28 Mexico	Orange	Blue	Blue	Blue	61 Sri Lanka	Red	Orange	Orange	Orange
29 Colombia	Orange	Orange	Blue	Orange	62 Angola	Red	Orange	Red	Orange
30 Brazil	Red	Blue	Blue	Blue	63 Bahrain	Red	Red	Orange	Red
31 Chile	Blue	Red	Blue	Red	64 Zambia	Red	Orange	Red	Red
32 Dom. Rep.	Orange	Blue	Orange	Orange	65 Lebanon	Red	Red	Red	Orange
33 Uruguay	Orange	Orange	Blue	Blue	66 Venezuela	Red	Red	Red	Red

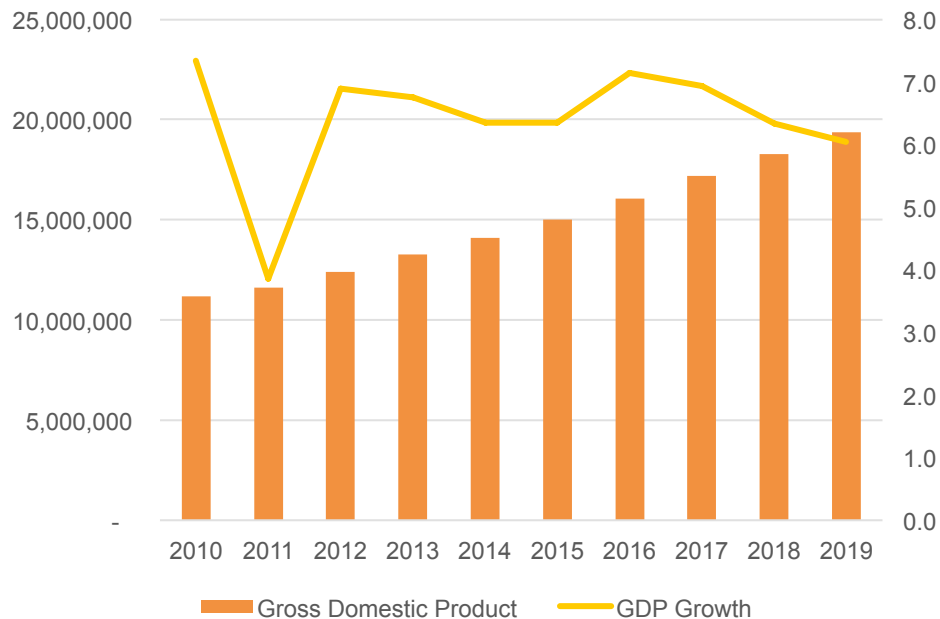
Sources: EIU; IMF; JPMorgan Chase; iShares; *The Economist*; central banks; Haver Analytics; World Bank; Finanzen.net

*Forecast †Yield on hard-currency bond or real yield on local bond ‡Foreign-exchange reserves, relative to 2020 foreign-debt payments and current-account deficit

REVIVING THE ECONOMY: WHERE DO WE WANT TO GO

We need a business recovery plan to stimulate the economy, shore up business and consumer confidence, safeguard workers and industries, mobilize assistance for critical supplies, support post-crisis manufacturing growth

Philippine Gross Domestic Product 2010-2019



Prior to the crisis, PH was seen as an economic star, over 6% growth, 7% manufacturing, just as we reached an inflection point, COVID was declared a global pandemic.

- Implement economic stimulus measures to mitigate impact of the crisis
- Support business resumption including workers' health and safety
- Initiatives aimed at increasing manufacturing productivity
- Support business reorientation toward future markets, sale channels, investment in innovation & domestic markets
- Stimulate spending in 2020 Q3 & Q4 2020 and aim for a strong recovery in 2021

**BRING BACK BUSINESS.
BRING BACK MSMES.
BRING BACK JOBS.**

FINANCIAL ASSISTANCE

DTI has launched programs to help affected MSMEs

Provide financial and non-financial assistance to preserve businesses and encourage the entry of new enterprises to create jobs; Upskill and reskill the workforce to the changing landscape of work; Incentivize innovation and entrepreneurship

P30 BILLION

DTI partners with DBP & Landbank for a P30-B financing program for MSMEs affected by COVID-19

P1 BILLION

Pondo sa Pagbabago at Pag-asenso – Enterprise Rehabilitation Fund (P3-ERF)

P500 MILLION

Loan for Medium Enterprises

P203 MILLION

Livelihood Seeding Program - Negosyo sa Barangay

CONGRESS STIMULUS MEASURES

10B

TECHNOLOGY ADOPTION AND INNOVATION to improve business resilience

80B

STARTUPS, MICRO, SMALL, and MEDIUM ENTERPRISES (SMSMEs)

44B

INDUSTRIAL DEVELOPMENT

Grants to support activities to improve business resilience (e.g. education, training, advising, etc.)

STRATEGIC INTERVENTIONS

- Assistance to MSMEs & startups thru grants for education, trainings, & counselling to improve business resiliency in the post COVID era: prevention & containment of transmissions of communicable diseases; coping with effects of shocks on the supply chain, distribution; online platforms; tele-work, online consulting; innovation in business practices, R&D, digital transformation; upskilling/reskilling
- Bridging loans for MSMEs & startups: SBC will increase availability of loanable funds, reduce eligibility requirements, increase maximum loan amounts, reduce interest rates, extend loan terms; loan proceeds may be used for payroll, materials, supplies, mortgage payments, rent, utilities, repurposing of business
- Assistance to Manufacturing and Services Industries thru grants, technical assistance, incentives for participation in trade fairs, R&D, innovation, investment support for repurposing, digital transformation, education, training, counseling

PLANS TO REVIVE AND RESTART THE ECONOMY

Industry Promotion Strategies Post ECQ

- Philippines as a complementary host country to target companies in the manufacturing industry, specifically those that are looking at diversifying their business locations to sustain and enhance competitiveness (i.e. companies with China operations, companies with concentrated supplier base in China, etc.)
- Looking at 20 existing business leads involving companies in China, Japan, Taiwan, and US that are looking at the PH as an investment hub amid the COVID19 (affected by US-China Trade War)
- Target Wuhan/CN-based companies to offer Philippines as a complementary host country for their operations.
- Encourage retention and present expansion opportunities for exporting companies in the Philippines (to complement production disruptions in China) i.e. medical supplies / devices, industrial & IT components, electronics & semicon, travel goods, etc.

e-Commerce Programs

- The DTI eCommerce office is spearheading “REBOOT PACKAGE FOR ONLINE MSME: PANTAWID COVID19 ECOMMERCE PROGRAM”
- The Reboot Package provides MSMEs who wish to start an online business, or to expand an existing one, a suite of assistance,



Manufacturing Support

□ Investment Facilitation

1. Facilitated entry of key foreign company officials to continue critical operations and jumpstart new production facilities
2. Linked companies to government agencies and hospitals for procurement/delivery of essential goods
3. Provided assistance in **sourcing of materials/components** such as fan motors (Sweden) for ventilators; electronics components for patient monitors (Netherlands); power components for COVID19 testing kits (South Korea); raw materials for alcohol; APIs for medicine.
4. Adopted a policy to consider domestic sales of essential goods as export sales to help relevant firms to still meet their export commitments

❑ Liberalizing grant of incentives for manufacture/importation of critical or needed equipment/supplies

1. DTI and DOF issued JMC No. 2020-02 which provides **exemption from import duty, taxes, and other fees** to companies producing/manufacturing essential products

2. Proposed 2020 IPP includes as priority areas:
 - **“All Qualified Activities Relating to the Fight Against the COVID-19 Pandemic”**
 - Production/manufacture of essential products such as medicines, medical equipment and devices, PPE, medical supplies, and consumables such as alcohol, sanitizers, etc, including production/manufacture of raw materials, semi-finished/intermediate goods, and machinery and equipment
 - Repurposing of manufacturing activities to produce the abovementioned products.
 - Provision of services such as but not limited to crematoriums, health waste treatment and disposal, laboratories, test facilities, hospitals, and quarantine facilities.

“Balik Probinsya, Bagong Pag-asa Program”

- Investments in activities supportive of programs to generate employment opportunities outside of congested urban areas
- May be provided fiscal incentives such as **income tax holiday** for up to 6 years



Creating demand and jobs through **BUILD BUILD BUILD**



Strengthen “buy local” advocacy through **GO LOKAL!**



Passage of the CITIRA Bill



Attracting investors: **EASE OF DOING BUSINESS**



Provide funding to MSMEs



- **Ensure food production of agriculture and manufacturing; mobilize logistics for food production**
- **Smart manufacturing (digital) and focus on health products and IT**
- **Ease regional wage, consider flexible work arrangements in labor (4 days/ week) and flexible work hours. Contractual workers need to work as well**
- **Create and allow authorized leaves for workers**
- **DTI attachés to enhance programs to attract investments**
- **Increase hiring of workers in regional officers and SB Corp.; Need to hire for MSME lending and program development workers**

MORE GRASSROOTS APPROACH IN PROGRAMS AND LIVELIHOOD INTERVENTIONS TO WIDEN REACH TO THE MARGINALIZED SECTORS TO ENSURE NO ONE LEFT BEHIND

Setting up Negosyo clinic/advocate partner at the barangay-level thru:

- Negosyo Serbisyo sa Barangay
- Livelihood packages for marginalized sector
- Negosyo center coaching
- Negosyo Centers
- SME Roving Academy (SMERA)
- Kapatid Mentor ME (KMME)
- PTTC Global MSME Academy (PTTC GMEA)
- Pondo sa Pagbabago at Pag-Asenso (P3)
- Shared Service Facility (SSF)
- GoLokal
- OTOP Next Gen

Target: **1,488** Negosyo Centers by 2022

40% - 45% GVA of SMEs by 2022

400-800K jobs/new businesses



REVITALIZE AND ENHANCE COMPETITIVENESS OF THE MANUFACTURING AND CREATIVE INDUSTRY SECTORS

Through enabling policies and performance-based, time-bound industry support programs on key and strategic sectors under i³S and the creative industries roadmap.



FOCUS IN DRIVING INVESTMENTS IN THOSE IDENTIFIED KEY AND STRATEGIC SECTORS

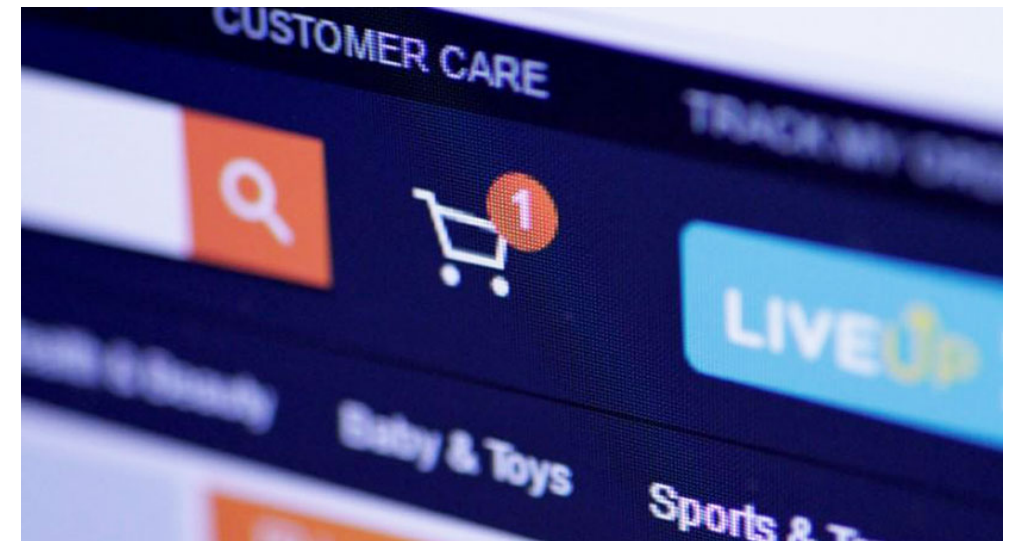
Stronger orientation for innovation (greater creativity in processes and products), using more smart manufacturing, and digital technologies



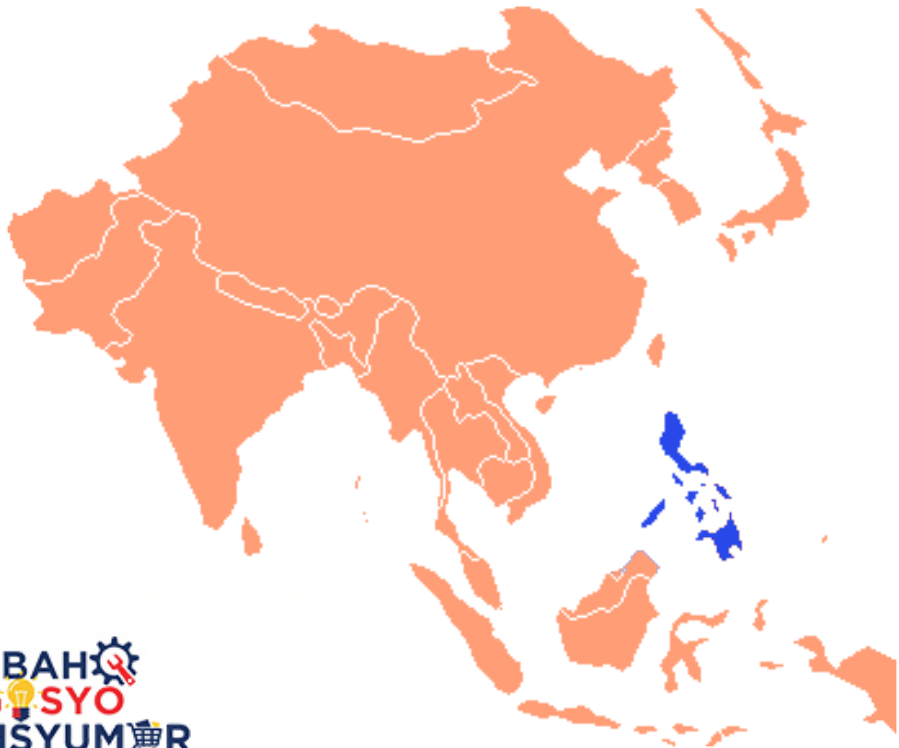
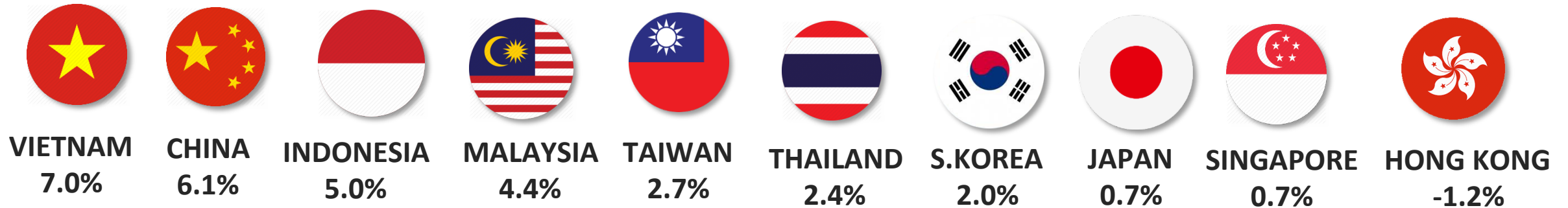
MAXIMIZE POTENTIAL OF THE DIGITAL ECONOMY

- By promoting eCommerce and digital technologies in MSME development
- By promoting financial inclusion in trade, logistics and operations, services, smart manufacturing, and in strengthening eGovernment services
- All these using Whole-of-Government approach

TARGET: e-Commerce 80% by 2022



REMEMBER WHERE WE ARE?



Philippines, 2nd-fastest growing economy in ASEAN during 2019



PHILIPPINES

6.0%

A crowd of people is silhouetted against a dramatic sunset sky with orange and yellow clouds. Many people are holding up Philippine flags, which feature a white triangle with a yellow sun and three stars, and blue and red triangles. The scene conveys a sense of national pride and collective celebration.

WE CAN BE GREAT AGAIN!

THANK YOU!

#WeHealAsOne